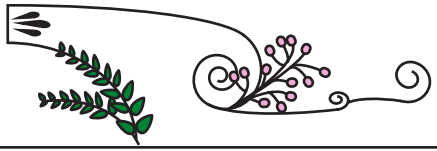




nawic
The National
Association of Women
in Construction



AWARDS FOR EXCELLENCE

CRYSTAL VISION AWARD

To submit an award visit

www.crystalvision.awardsplatform.com

Purpose & Recognition

The Crystal Vision Award celebrates the achievement of individuals, businesses or organisations that actively promote and encourage participation and career progression of women in the construction or related industries. This award celebrates the continuing commitment towards advancing the interests of women in the construction industry as a whole using examples such as establishing policies, supporting legislation and creating unique organisational initiatives.

Eligibility

Any individual, business or organisation residing or operating in South Australia associated with the construction, property and related industries.

How to Nominate

1. Register online and enter all required details into the online platform
2. Read and agree to the NAWIC SA Terms & Conditions of Nomination
3. Complete online submission to meet the requirements of the assessment criteria
4. Be aware of preference for winners to attend the Leadership Breakfast Panel on Thursday 12th December
5. Ensure online entry includes:
 - Nominee details
 - Nominee biography (written in third person)
 - Summary of Submission (written in third person to be read on Awards night)
 - Assessment Criteria completed in relevant word count (written in first or third person)
 - Letter of endorsement
 - Good quality image of nominee (min 1, max 2)
 - Good quality image of any projects referenced (min 1, max 3)

Important Dates

- Nominations open** | Monday 29 July
- Submission workshop event** | Thursday 15 August
- Nominations close** | Friday 20 September
- Awards event** | Friday 25 October
- Leadership Breakfast Panel event** | Thursday 12 December
- National Crystal Vision Awards** | October 2020

Assessment Criteria

Nominees are assessed by a panel of industry volunteers based only on the demonstration of the following assessment criteria:

1. Have authority to influence and/or make policy decisions beneficial to women in the construction or related industry.
2. Established policy, enacted legislation, initiated change or created initiatives to benefit and empower women in the construction or related industry.
3. Actively promoted the inclusion and/or advancement of women in the construction or related industry.
4. Demonstrated leadership in taking initiatives and implementing them on behalf of women in construction or related industry.
5. Successfully broken barriers with a 'first' for women in construction or related industry.
6. Acted as a role model and/or mentor for women.

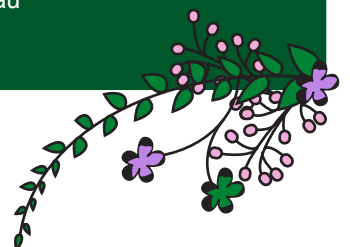
Nomination Enquiries

Penny Ryall
NAWIC SA Awards Online Manager
penny.ryall@bluescope.com

Danica Trimboli
NAWIC SA Awards Chair
danica.trimboli@badge.net.au

Award sponsored by

SARAH Building Great Relationships.





nawic
The National
Association of Women
in Construction



AWARDS FOR EXCELLENCE

BUSINESS PROFESSIONAL AWARD

To submit an award visit

www.crystalvision.awardsplatform.com

Purpose & Recognition

The Business Professional Award recognises the dedication and excellence of an individual who has played a significant role within an organisation or business as a decision maker (eg owner, management, administration, human resources, estimating, legal, finance, not-for-profit). The organisation or business must predominately operate or support the construction or related industry.

Eligibility

Any female who has played a significant business operations role within a business or organisation operating in South Australia related to construction or related industry. Irrespective of position title, the individual must have contributed substantially to business growth or project success within the organisation or business.

How to Nominate

1. Register online and enter all required details into the online platform
2. Read and agree to the NAWIC SA Terms & Conditions of Nomination
3. Complete online submission to meet the requirements of the assessment criteria
4. Be aware of preference for winners to attend the Leadership Breakfast Panel on Thursday 12th December
5. Ensure online entry includes:
 - Nominee details
 - Nominee biography (written in third person)
 - Summary of Submission (written in third person to be read on Awards night)
 - Assessment Criteria completed in relevant word count (written in first or third person)
 - Letter of endorsement
 - Good quality image of nominee (min 1, max 2)
 - Good quality image of any projects referenced (min 1, max 3)

Important Dates

Nominations open | Monday 29 July

Submission workshop event | Thursday 15 August

Nominations close | Friday 20 September

Awards event | Friday 25 October

Leadership Breakfast Panel event | Thursday 12 December

National Crystal Vision Awards | October 2020

Assessment Criteria

Nominees are assessed by a panel of industry volunteers based only on the demonstration of the following assessment criteria:

Nominations are judged by a panel of industry volunteers based only on the demonstration of the following assessment criteria:

1. Brief outline of the nominee's organisation or business including trading history, structure and operations.
2. Description of nominee's role within the organisation or business and contribution to the success of said organisation or business including:
 - Details of contribution
 - Effect on the organisation or business
 - Details of challenges overcome
 - Evidence of proactive planning, risk management and influence to business or organisation
 - Evidence showing nominees positive management and relationship of key stakeholders
3. Outline of nominee's past achievements, aspirations and goals for future participation in the construction industry.

Nomination Enquiries

Penny Ryall

NAWIC SA Awards Online Manager
penny.ryall@bluescope.com

Danica Trimboli

NAWIC SA Awards Chair
danica.trimboli@badge.net.au





nawic
The National
Association of Women
in Construction



AWARDS FOR EXCELLENCE

EMERGING LEADER AWARD

To submit an award visit

www.crystalvision.awardsplatform.com

Purpose & Recognition

The Emerging Leader Award recognises the dedication of a female individual under 30 years of age working in the construction or related industry. This award celebrates the individual's contribution to the construction industry in South Australia, leadership potential and community involvement.

Eligibility

Any female individual under 30 years of age at the time of nomination residing in South Australia associated with the construction, property and related industries.

How to Nominate

1. Register online and enter all required details into the online platform
2. Read and agree to the NAWIC SA Terms & Conditions of Nomination
3. Complete online submission to meet the requirements of the assessment criteria
4. Be aware of preference for winners to attend the Leadership Breakfast Panel on Thursday 12th December
5. Ensure online entry includes:
 - Nominee details
 - Nominee biography (written in third person)
 - Summary of Submission (written in third person to be read on Awards night)
 - Assessment Criteria completed in relevant word count (written in first or third person)
 - Letter of endorsement
 - Good quality image of nominee (min 1, max 2)
 - Good quality image of any projects referenced (min 1, max 3)

Important Dates

Nominations open | Monday 29 July
Submission workshop event | Thursday 15 August
Nominations close | Friday 20 September
Awards event | Friday 25 October
Leadership Breakfast Panel event | Thursday 12 December
National Crystal Vision Awards | October 2020

Assessment Criteria

Nominees are assessed by a panel of industry volunteers based only on the demonstration of the following assessment criteria:

1. Proven ability to overcome challenges, demonstration initiative and leadership potential and work as a part of a team
2. Demonstration of skills necessary to be successful in the construction industry in the nominee's chosen field
3. Examples of leadership that inspires, motivates and provides positive role modelling.
4. Examples of participation in the construction industry and wider community
5. Clear aspirations and goals for future participation in the construction industry and/or wider community.

Nomination Enquiries

Penny Ryall

NAWIC SA Awards Online Manager
penny.ryall@bluescope.com

Danica Trimboli

NAWIC SA Awards Chair
danica.trimboli@badge.net.au

Award sponsored by

BADGE





AWARDS FOR EXCELLENCE

GRADUATE OF THE YEAR AWARD

To submit an award visit

www.crystalvision.awardsplatform.com

Purpose & Recognition

The Graduate of the Year Award recognises a female individual's outstanding contribution to their time in the construction or related industry since graduating between 2017 and 2018. This award celebrates the individual's contribution to their business or organisation and goals for future participation in the construction industry.

Eligibility

Any female individual who graduated successfully from any construction, engineering, architecture, or trade related course in a registered training/education facility in the Class of 2017 or 2018 who resides in South Australia and is currently employed within the construction industry.

How to Nominate

1. Register online and enter all required details into the online platform
2. Read and agree to the NAWIC SA Terms & Conditions of Nomination
3. Complete online submission to meet the requirements of the assessment criteria
4. Be aware of preference for winners to attend the Leadership Breakfast Panel on Thursday 12th December
5. Ensure online entry includes:
 - Nominee details
 - Nominee biography (written in third person)
 - Summary of Submission (written in third person to be read on Awards night)
 - Assessment Criteria completed in relevant word count (written in first or third person)
 - Letter of endorsement
 - Good quality image of nominee (min 1, max 2)
 - Good quality image of any projects referenced (min 1, max 3)

Important Dates

- Nominations open** | Monday 29 July
Submission workshop event | Thursday 15 August
Nominations close | Friday 20 September
Awards event | Friday 25 October
Leadership Breakfast Panel event | Thursday 12 December
National Crystal Vision Awards | October 2020

Assessment Criteria

Nominees are assessed by a panel of industry volunteers based only on the demonstration of the following assessment criteria:

1. Testament of nominee's quality of work and evidence to be a contributing team member
2. Reference to a time when they were able to utilise something learnt from their time studying that has been transposed to a workplace scenario
3. Nominee's commitment to the construction industry or wider community
4. Nominee's long term career goals and what inspired them to study for a career in construction
5. Statement from the nominee on how women contribute to the construction industry

Nomination Enquiries

Penny Ryall

NAWIC SA Awards Online Manager
penny.ryall@bluescope.com

Danica Trimboli

NAWIC SA Awards Chair
danica.trimboli@badge.net.au

Award sponsored by

Starfish
DEVELOPMENTS





AWARDS FOR EXCELLENCE

PROJECT ACHIEVEMENT AWARD

To submit an award visit

www.crystalvision.awardsplatform.com

Purpose & Recognition

The Project Achievement Award recognises a female who has accomplished significant contribution to the construction or fit-out of a project. The accomplished contribution may be process, outcome, innovation or stakeholder focused, but has been a significant element of overall project delivery success.

Eligibility

An individual female working in the South Australian construction industry on a construction project that reached Practical Completion between 30 June 2018 and 30 June 2019. The individual must have successfully managed the significant contribution to the project in a role similar to (but not limited to) a construction manager, project manager, site engineer, contract administrator, site manager, WHS officer, foreperson, leading hand or supervisor.

How to Nominate

1. Register online and enter all required details into the online platform
2. Read and agree to the NAWIC SA Terms & Conditions of Nomination
3. Complete online submission to meet the requirements of the assessment criteria
4. Be aware of preference for winners to attend the Leadership Breakfast Panel on Thursday 12th December
5. Ensure online entry includes:
 - Nominee details
 - Nominee biography (written in third person)
 - Summary of Submission (written in third person to be read on Awards night)
 - Assessment Criteria completed in relevant word count (written in first or third person)
 - Letter of endorsement
 - Good quality image of nominee (min 1, max 2)
 - Good quality image of any projects referenced (min 1, max 3)

Important Dates

Nominations open | Monday 29 July
Submission workshop event | Thursday 15 August
Nominations close | Friday 20 September
Awards event | Friday 25 October
Leadership Breakfast Panel event | Thursday 12 December
National Crystal Vision Awards | October 2020

Assessment Criteria

Nominees are assessed by a panel of industry volunteers based only on the demonstration of the following assessment criteria:

1. Management of a team that demonstrates a high performance culture
2. Outstanding management of subcontractors, suppliers and associated stakeholders
3. Exceptional quality of final workmanship
4. Exceptional management of construction interfaces eg public safety, operational environment stakeholders, neighbours
5. Evidence of positive budget and programme achievements

Nomination Enquiries

Penny Ryall

NAWIC SA Awards Online Manager
penny.ryall@bluescope.com

Danica Trimboli

NAWIC SA Awards Chair
danica.trimboli@badge.net.au

Award sponsored by

MYKRA

Construct · Maintain · Refurbish · Remediate





nawic
The National
Association of Women
in Construction



AWARDS FOR EXCELLENCE

CONTRIBUTION TO DESIGN AWARD

To submit an award visit

www.crystalvision.awardsplatform.com

Purpose & Recognition

The Contribution to Design Award recognises excellence by a female residing in South Australia to the design and/or concept of a construction project. This award celebrates the individual's contribution to a construction or fit-out project that delivers innovative or complex design elements and successfully meets or exceeds a client brief.

Eligibility

Design contribution may include architecture, interior design, engineering, landscape architecture, urban design, artistic design or heritage design and the project must have reached Practical Completion between 1 January 2019 and 30 June 2019. The project may have been completed in any state or territory of Australia.

How to Nominate

1. Register online and enter all required details into the online platform
2. Read and agree to the NAWIC SA Terms & Conditions of Nomination
3. Complete online submission to meet the requirements of the assessment criteria
4. Be aware of preference for winners to attend the Leadership Breakfast Panel on Thursday 12th December
5. Ensure online entry includes:
 - Nominee details
 - Nominee biography (written in third person)
 - Summary of Submission (written in third person to be read on Awards night)
 - Assessment Criteria completed in relevant word count (written in first or third person)
 - Letter of endorsement
 - Good quality image of nominee (min 1, max 2)
 - Good quality image of any projects referenced (min 1, max 3)

Important Dates

- Nominations open | Monday 29 July
- Submission workshop event | Thursday 15 August
- Nominations close | Friday 20 September
- Awards event | Friday 25 October
- Leadership Breakfast Panel event | Thursday 12 December
- National Crystal Vision Awards | October 2020

Assessment Criteria

Nominees are assessed by a panel of industry volunteers based only on the demonstration of the following assessment criteria:

1. Summary of project's unique or unusual features and technical complexities
2. Summary of nominee's role on the project and in the design including the extent of contribution to:
 - Best practice design principles
 - Exceptional design outcomes
3. Description of how the nominee created a successful design that met client needs for function and aesthetics including demonstrated examples of positive relationships with client and stakeholders.
4. A demonstrated example of a challenge that was overcome and how
5. How the nominee approached principles of ecologically sustainable development and end-user needs

Nomination Enquiries

Penny Ryall

NAWIC SA Awards Online Manager
penny.ryall@bluescope.com

Danica Trimboli

NAWIC SA Awards Chair
danica.trimboli@badge.net.au

Award sponsored by





nawic
The National
Association of Women
in Construction



AWARDS FOR EXCELLENCE

CONDITIONS OF NOMINATION

1. Nominees to address the selection criteria described on the website for the relevant award. Nominees may provide further information if it is relevant to their submission
2. All nominees must be a financial member of NAWIC SA to nominate or be nominated for an award at the time of nomination and judging
3. All nominees must be available to attend the Awards night on 25th October 2019 and the Leadership Panel Breakfast on 12th December 2019
4. Members of the NAWIC SA Chapter Council may not be nominated for an award
5. Winning entries from past NAWIC awards may not be resubmitted. Previous entries that did not win may be resubmitted (provided that the nomination complies with the criteria outlined on the website)
6. NAWIC A reserves the right to extend the final date of entry submissions or, in its discretion, provide extensions to one or more potential nominees. NAWIC SA is under no obligation to provide an extension to all nominees, or publish any extension.
7. NAWIC SA reserves the right to use any nomination material including photographs during the Awards night
8. The judges reserve the right to request further information and documentation from a nominee if necessary
9. The judges reserve the right to determine the eligibility or otherwise of each nomination
10. The judges reserve the right to make no award if in their view, the standard of nominations is such that it is not appropriate that an award be granted
11. The judges' decision is final and no correspondence will be entered in to
12. NAWIC SA reserve the right to use any nomination details including photographs and text in promotional or other marketing material
13. A nominee may be nominated for more than one award, however a separate nomination must be submitted in respect of each award
14. Joint nominations of up to two persons for each nomination are permitted, however both persons need to satisfy the relevant criteria
15. NAWIC SA undertakes to use its best endeavours in respect of such use, but will not be responsible for any error, mistake, omission or misrepresentation in respect of the same

